



# Parallels Remote Application Server

Universal Printing Best Practices

Parallels International GmbH  
Vordergasse 59  
8200 Schaffhausen  
Switzerland  
Tel: + 41 52 672 20 30  
[www.parallels.com](http://www.parallels.com)

© 2021 Parallels International GmbH. All rights reserved. Parallels and the Parallels logo are trademarks or registered trademarks of Parallels International GmbH in Canada, the U.S., and/or elsewhere.

Apple, Safari, iPad, iPhone, Mac, macOS, iPadOS are trademarks of Apple Inc. Google, Chrome, Chrome OS, and Chromebook are trademarks of Google LLC.

All other company, product and service names, logos, brands and any registered or unregistered trademarks mentioned are used for identification purposes only and remain the exclusive property of their respective owners. Use of any brands, names, logos or any other information, imagery or materials pertaining to a third party does not imply endorsement. We disclaim any proprietary interest in such third-party information, imagery, materials, marks and names of others. For all notices and information about patents please visit <https://www.parallels.com/about/legal/>

# Contents

<b>Introduction .....</b>	<b>4</b>
Overview .....	4
Parallels RAS 18 release history .....	5
<b>Parallels RAS Universal Printing Best Practices .....</b>	<b>6</b>
Print formats .....	6
Printing settings and defaults .....	7
Fonts and font caching .....	8
Automated font distribution .....	9
Printer redirection optimizations .....	11
Printer retention .....	13
Universal printing compression.....	15
Driver environment consistency.....	16
Security and integrity.....	17
Non-Windows and mobile platforms support .....	18
<b>Index .....</b>	<b>19</b>

## CHAPTER 1

# Introduction

Printing is a vital component of any office environment. Printing can be as simple as connecting a printer to a computer and installing a driver, but it can easily become a complex task with many variables. This is especially true for modern office environments that have adopted the Microsoft Remote Desktop Services infrastructure. IT administrators in such environments are faced with the need to ensure normal usage of local printers, especially when people are using virtual applications and remote desktops.

Printing while using RDS has proven to be a challenge to many enterprises whose IT administrators tend to struggle to provide the technology that can adequately deliver on printing demands created by virtualization and mobile deployments. This is because users can only print through RDS if the same set of drivers is installed on both a local device and a terminal server. Problem is, many printer drivers simply do not function in a Terminal Services environment, so the few available technologies became nonviable. Furthermore, ensuring that terminal servers contain a copy of every printer driver used throughout the entire organization is a major management headache that proves to be very taxing on IT administrators and, consequently, affects the organizations themselves.

Parallels® Remote Application Server offers a variety of features that enable administrators to successfully integrate printing in every deployment scenario. By choosing the most appropriate printing configuration for their organization, IT administrators can significantly improve and simplify the user experience when it comes to printing.

### In This Chapter

Overview .....	4
Parallels RAS 18 release history.....	5

## Overview

Printing is a vital component of any office environment. Printing can be as simple as connecting a printer to a computer and installing a driver, but it can easily become a complex task with many variables. This is especially true for modern office environments that have adopted the Microsoft Remote Desktop Services infrastructure. IT administrators in such environments are faced with the need to ensure normal usage of local printers, especially when people are using virtual applications and remote desktops.

Printing while using RDS has proven to be a challenge to many enterprises whose IT administrators tend to struggle to provide the technology that can adequately deliver on printing demands created by virtualization and mobile deployments. This is because users can only print through RDS if the same set of drivers is installed on both a local device and a terminal server. Problem is, many printer drivers simply do not function in a Terminal Services environment, so the few available technologies became nonviable. Furthermore, ensuring that terminal servers contain a copy of every printer driver used throughout the entire organization is a major management headache that proves to be very taxing on IT administrators and, consequently, affects the organizations themselves.

Parallels® Remote Application Server offers a variety of features that enable administrators to successfully integrate printing in every deployment scenario. By choosing the most appropriate printing configuration for their organization, IT administrators can significantly improve and simplify the user experience when it comes to printing.

## Parallels RAS 18 release history

The following table lists the Parallels RAS 18 release history. Parallels RAS documentation is updated for every release. This guide refers to the latest Parallels RAS 18 release from the table below. If you are using a newer Parallels RAS release or version, please download the current version of the guide from <https://www.parallels.com/products/ras/resources/>.

Parallels RAS Version	Release	Date
18.0	Initial release	12/14/2020
18.0	Update 1	03/03/2021
18.1	Initial release	07/14/2021
18.2	Initial release	11/03/2021

## CHAPTER 2











# Parallels RAS Universal Printing Best Practices

### In This Chapter

Print formats.....	6
Printing settings and defaults.....	7
Fonts and font caching.....	8
Automated font distribution.....	9
Printer redirection optimizations.....	11
Printer retention.....	13
Universal printing compression.....	15
Driver environment consistency.....	16
Security and integrity.....	17
Non-Windows and mobile platforms support.....	18

## Print formats

Parallels Remote Application Server Universal Printing sends print jobs in different formats depending on the client operating system, as shown in the table below.

Platform	EMF	PDF	BMP
Windows			
Linux			
Mac			
Android			
iOS			
Windows Phone			
Chrome App			
HTML5			

The Enhanced Metafile format (EMF) is available on the Windows platform only. EMF allows to generate smaller print jobs and supports font embedding. EMF requires less server resources compared to PDF and BMP. Documents are spooled page by page, which expedites the printing process.

PDF is a portable format and is available on all platforms, but a complete document is spooled during printing (not individual pages), which requires more terminal server resources. On the other hand, PDF has the best compression and retains all fonts within.

BMP (bitmap image) requires larger network data transfer and heavily utilizes the terminal server resources. Printing job is spooled page by page. A BMP image is rasterized on the server side and has complete font consistency compared to EMF and PDF.

Additionally, for specific printers/applications, RAS Universal Printing can automatically switch to the ready to print (RAW) format when necessary.

### Parallels recommends

- Use EMF when possible.
- In Windows, PDF should only be used when end users experience incorrect printer output such as garbled print, truncated text, or missing characters (incorrect or missing fonts).

## Printing settings and defaults

Parallels RAS Universal Printing sets printer defaults on the server side according to printer settings on a local computer or mobile device. To be universal, Parallels RAS Universal Printing substitutes the native printer preferences dialog with a custom one, which contains a common set of configuration parameters such as page layout, paper size, collate, duplex, color, paper tray, print quality.

### Parallels recommends

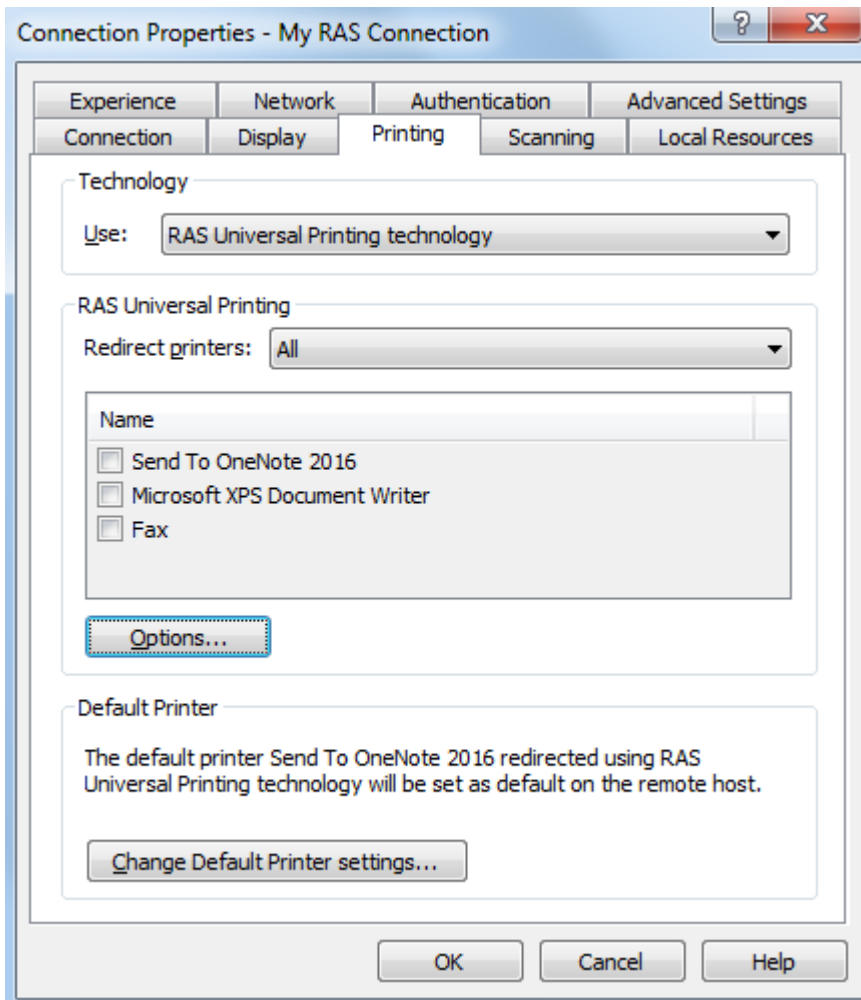
To achieve the same default printer settings on every terminal server in a multi-server environment, the following tasks should be performed on user devices to meet user expectations:

- Configure all default printer options per printer (e.g. page layout, paper size) that the user expects to see as defaults on the server.
- Preconfigure all extra printer preferences (e.g. paper density, watermarks).

In Windows, it is possible to configure Parallels Client to show the native printer preferences dialog before printing. This will allow the user to specify additional printing options before the job goes to the printer. To configure this option:

- 1 In Parallels Client for Windows, right-click a Parallels RAS connection you would like to configure and choose **Connection Properties**.

- 2 In the **Connection Properties** dialog, click the **Printing** tab.



- 3 In the **Technology** section, select **RAS Universal Printing technology** in the drop-down list.
- 4 Click the **Options** button.
- 5 In the **RAS Universal Printing Options** dialog, select **Use client preferences for all printers**, or select **Use client preferences for the following printers** and then specify the printers.

## Fonts and font caching

One of the common printing issues for all universal printing solutions is to create an identical fonts environment for the server and the client.

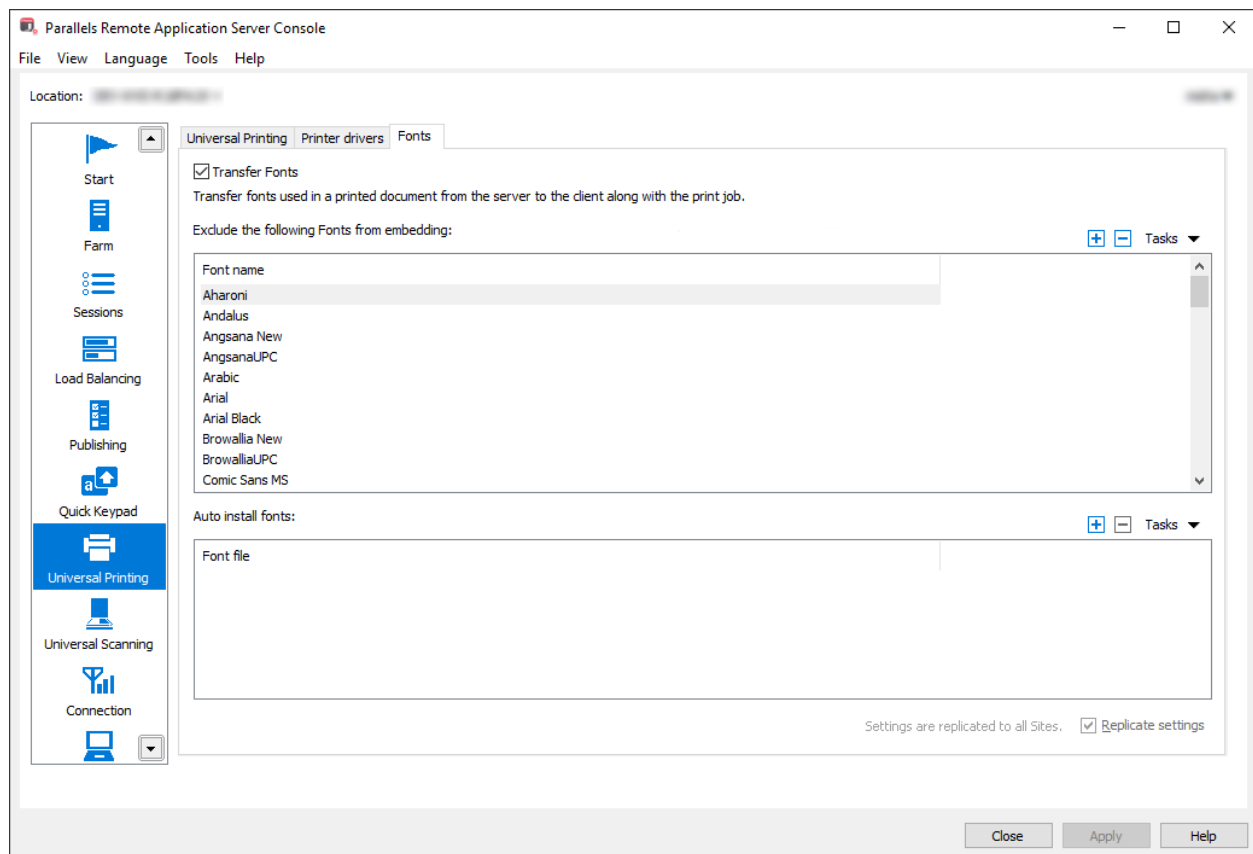
For the EMF format (Windows only) Parallels RAS Universal Printing is able to extract embedded fonts (or fonts used in a particular document) automatically and then transfer them to Parallels Client allowing it to print documents using the same exact fonts.



Parallels Client can cache fonts installed on a local computer, so it does not have to extract and transfer this data over network on subsequent printouts.

## Parallels recommends

Exclude standard operating system fonts (Arial, Times New Roman, etc.). Also exclude fonts that are already present on RD Session Hosts according to the **Fonts Management** settings in the RAS console. To view and modify the settings, open the RAS console and navigate to **Universal Printing > Fonts**.

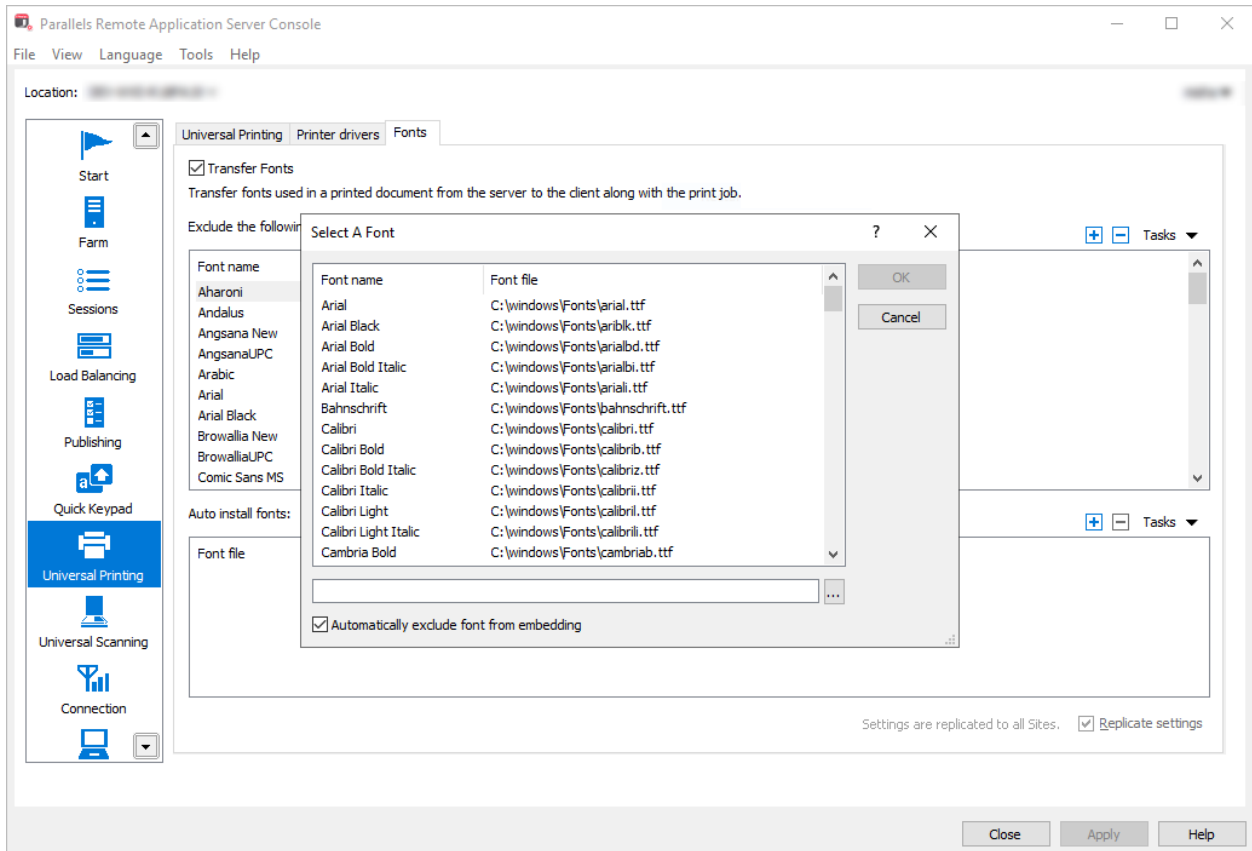


## Automated font distribution

For specific fonts that are widely used in your organization (e.g. custom fonts used in corporate document templates) it is optimal to use the automatic font distribution feature in the RAS console. To use the feature:

- 1 In the RAS console, navigate to **Universal Printing > Fonts**.
- 2 In the **Auto install fonts** section, click **Tasks > Add**.
- 3 Select a font and click **OK**.

#### 4 Repeat for other desired fonts.



The selected fonts will be installed on RD Session Hosts from where Parallels Client running on user devices will be able to obtain them.

#### Parallels recommends

- On the **Fonts** tab (see the screenshot above), use the **Auto install fonts** list to keep fonts synchronized on all RD Session Hosts and clients.
- If you select the **Automatically exclude font from embedding** option, the installed fonts will be excluded from the font embedding process, which will speed up the printing process.

## Printer redirection optimizations

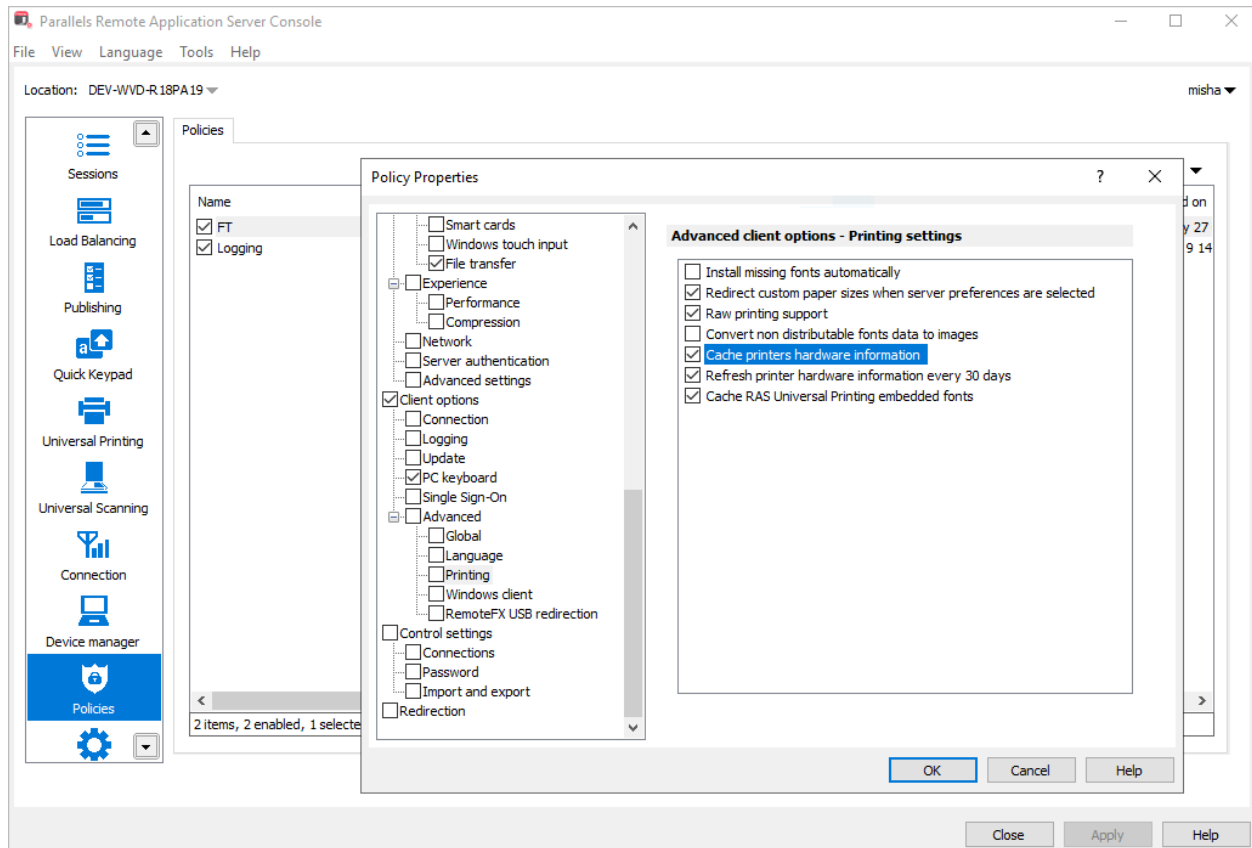
The printer-related hardware configuration on client devices changes very rarely, therefore it is recommended to use the Parallels Client feature of caching the printer hardware information. When this feature is enabled, Parallels Client will not query printer devices about hardware specifications every time an RDP session starts. Instead, it will use cached data collected on the first session start. Using this feature significantly improves the printer's redirection velocity making it available to the user almost immediately on an application or a desktop start. The caching mechanism automatically detects if new printers were added to the redirection environment and automatically keeps the cache current.

By default, Parallels RAS redirects all available client printers, including paperless printers such as Microsoft XPS Document Writer, Microsoft Print to PDF, Foxit Reader PDF Printer, and some others. These printers create extra load for Microsoft Spooler Service but are not useful. To reduce the load, you can exclude such printers from redirection as described in the recommendation section below.

### Parallels recommends

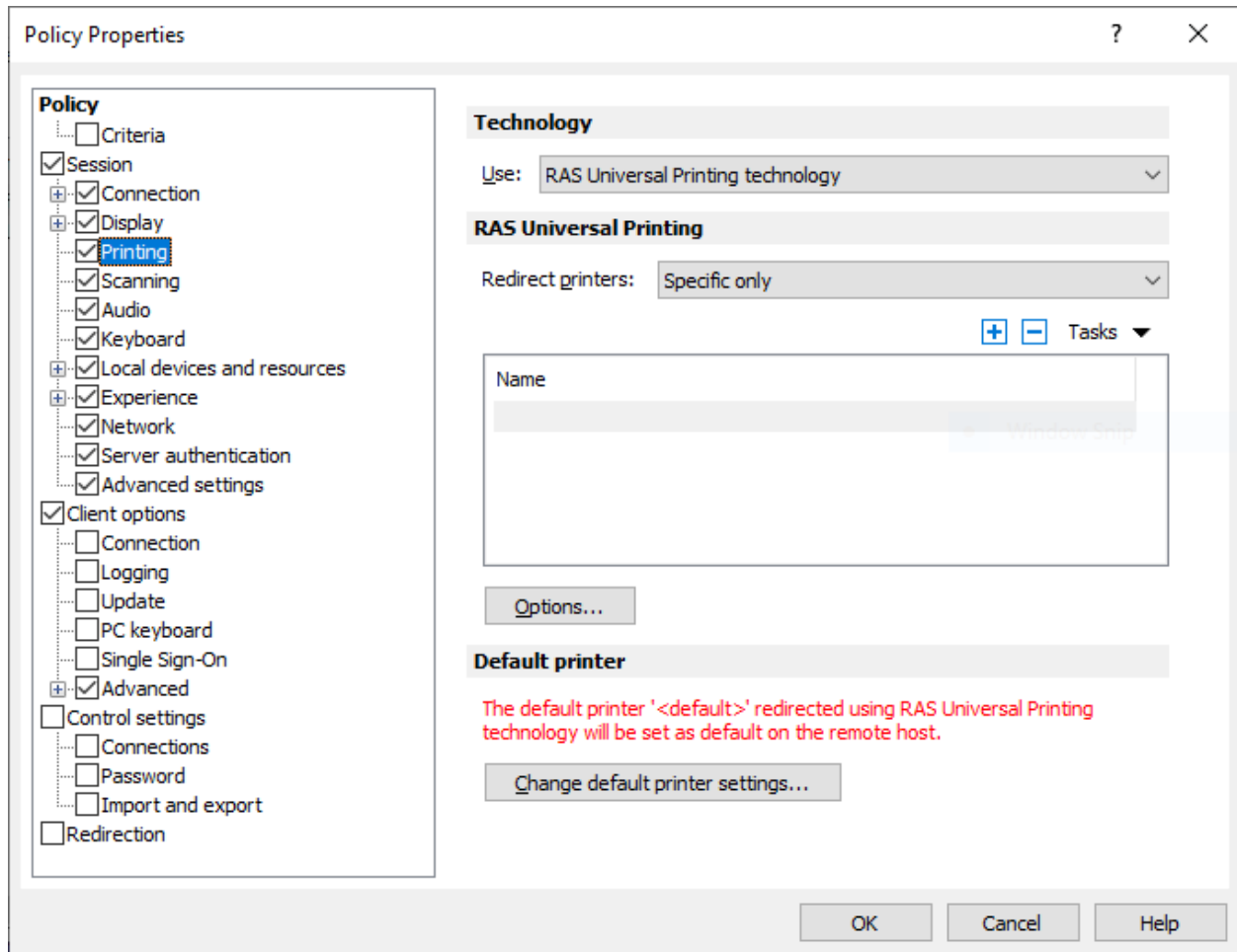
Enable caching of printer hardware information for all users via policy in the RAS console. To do so:

- 1** In the RAS console, select the **Policies** category.
- 2** Right-click a policy and choose **Properties**.
- 3** In the **Policy Properties** dialog, navigate to **Client options > Advanced > Printing**.
- 4** Select the **Cache printers hardware information** option.



To redirect only those printers that are required by end users (and to exclude those that are not), do the following:

- 1 In the RAS console, select the **Policies** category.
- 2 Right-click a policy and choose **Properties**. If you don't have any policies yet, create a new one.
- 3 In the **Policy Properties** dialog, navigate to **Session > Printing**.
- 4 In the **Redirect printers** drop-down list, select **Specific only**.
- 5 Click **Tasks > Add** and type a name of the printer to include in redirection.



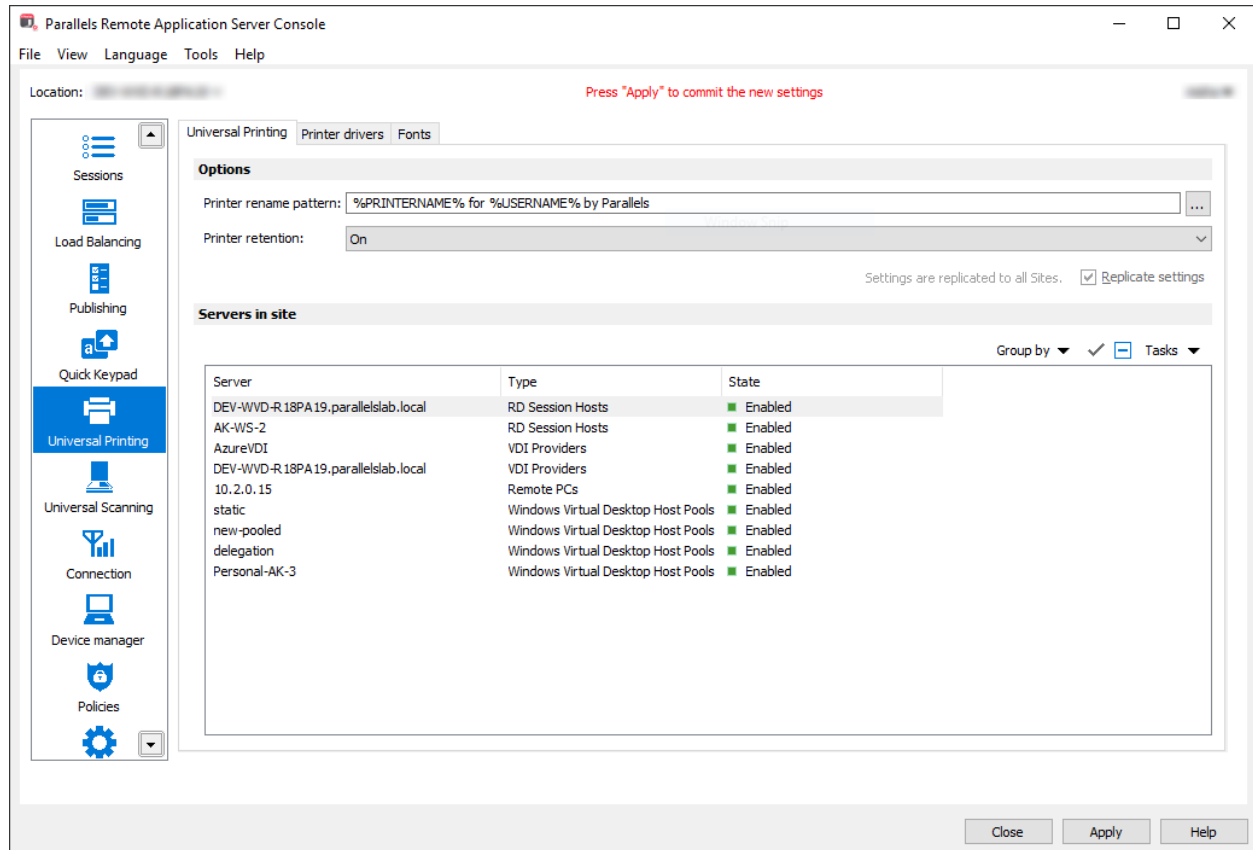
## Printer retention

Printer redirection can be slow at times, which manifests itself in users waiting until printers are redirected on logon. To improve user experience, Parallels RAS 17 introduces a new feature where user printers are not deleted from a user session on user log off and can be reused in the future.

Take a note of the following when using this feature:

- On user logoff the printers are kept in registry, but user permissions are recalled.
- On user logon, the permissions are provided again, and printers become available immediately.
- Enabling this feature becomes especially beneficial if **Wait until all RAS Universal Printers are redirected before showing the application** option is required to be enabled in Publishing defaults.

To enable printer retention, in the RAS Console, select the **Universal printing** category and set the **Printer retention** option to "On".



### Use case scenario

45+ printers are defined on windows 10 and **Wait until all RAS Universal Printers are redirected before showing the application** option is enabled in Publishing defaults:

- Printer retention is set to "Off" — on every logon it takes 27 seconds from the moment the progress bar with printer redirection appears.
- Printer retention is set to "On" — only the first logon takes 27 seconds from the moment the progress bar with printer redirection appears. Every consequent logon takes less than 2 seconds from the moment the progress bar with printer redirection appears.

### Parallels recommends

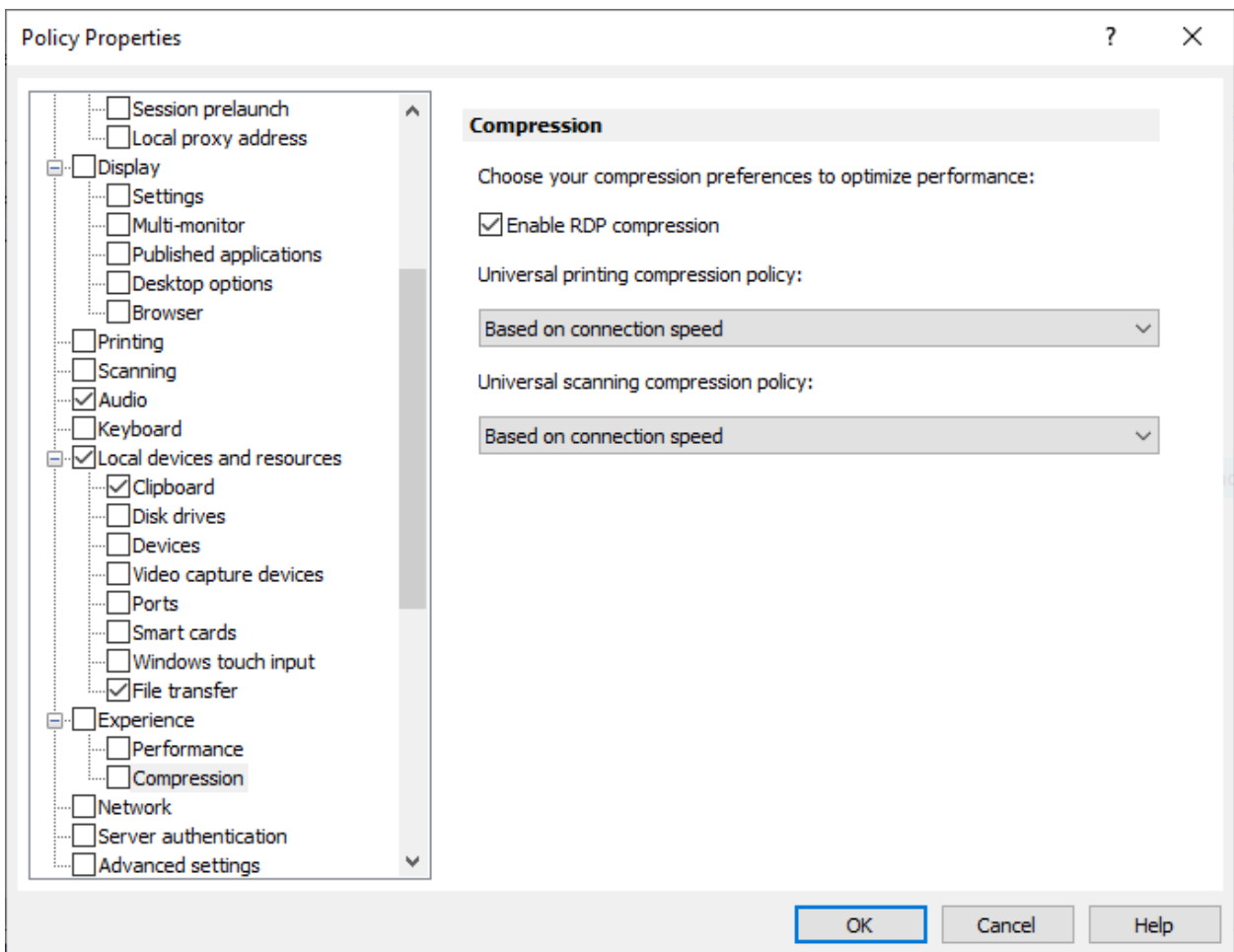
Enabling the **Printer retention** option may greatly improve user experience, especially if the **Wait until all RAS Universal Printers are redirected before showing the application** option is enabled in Publishing defaults.

## Universal printing compression

For Windows desktop clients (full and basic), Parallels RAS v15.5 introduces a new option called **Universal printing compression policy**. It allows system administrator to adjust printing compression levels via client policy settings in the RAS Console.

To set a printing compression policy:

- 1 In the RAS Console, select the **Policies** category.
- 2 Right-click an existing policy and choose **Properties**.
- 3 In the **Policy Properties** dialog, navigate to **Session > Experience > Compression**.



- 4 Select one of the following options from the **Universal printing compression policy** drop-down list:
  - **Compression disabled**
  - **Best speed (uses less CPU)**

- **Best size (uses less network traffic)**
- **Based on connection speed** (default)

If the type of printed documents is predictable — for instance, your documents are always very small or always very large — you can benefit by selecting an appropriate compression policy. However, printing compression brings the most benefit to network connections with limited bandwidth or latency when printing often slows down thus negatively affecting user experience.

### Parallels recommends

Parallels recommends using the **Best size** compression policy to make print jobs smaller and transfer it faster if the client devices are powerful enough from the CPU and memory perspective. If the client devices are not powerful enough, the **Best speed** option policy should be used.

## Driver environment consistency

Microsoft Spooler Service may become unstable if the terminal server has a very large number of printer drivers installed. Although RAS Universal Printing has no limitations regarding printer types, it is important to protect the terminal servers from printer driver sprawling. In order to mitigate this issue, Parallels RAS Universal Printing includes the printer driver exclusion feature to filter out printer devices that are not needed.

All printer drivers used via Parallels RAS Universal Printing conform to the common Windows printing driver specification and can be managed using standard mechanisms available in Windows.

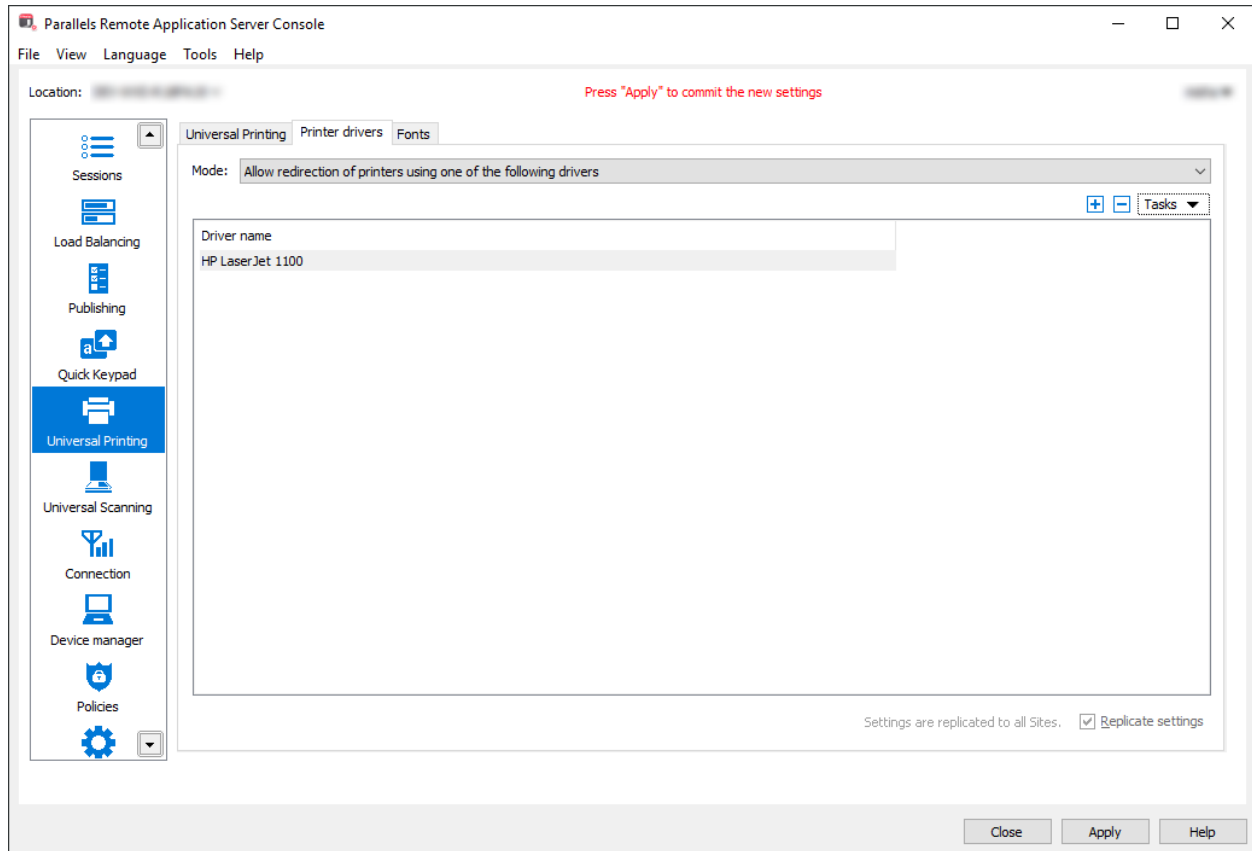
### Parallels recommends

Allow redirection of only the printers that you need and exclude the printers that you don't. This can be done in the RAS console as follows:

- 1** In the RAS console, navigate to **Universal Printing > Printer drivers**.
- 2** In the **Mode** drop-down list, select one of the following options depending on your preferences:
  - **Allow redirection of printers using one of the following drivers** — if you select this option (and specify the driver names in the next step), the printers using the specified drivers will be redirected, while all others will not.
  - **Allow redirection of printers which do not use the following drivers** — this option works in the opposite way to the one above.



3 Click **Tasks > Add** and then type a driver name. Repeat this step for more drivers if needed.



## Security and integrity

It is not required to apply any extra security constraints on RAS Universal Printing. All steps of a printing process are already configured for best security, including:

- Management of universal printer devices on terminal servers is allowed using the special Print Operators accounts only. Regular users are only allowed to print and manage print queues of their own redirected devices.
- Temporary files produced during the printing process are stored in secure locations of user profiles, which means that nobody except specially assigned system administrators can access printed documents.
- Network transfer of print jobs is guarded by the RDP protocol encryption with an optional usage of SSL for advanced security.

## Non-Windows and mobile platforms support

Due to hardware and software limitations, non-Windows Parallels Clients (including Chrome and HTML5) send printing jobs in the PDF format only (Parallels Clients are forced to use it automatically, no configuration required).

Parallels Client for Linux and Parallels Client for Mac can replicate server-side printers based on the actual Parallels Client printer configuration. Other non-Windows Parallels Clients perform redirection based on the legacy mode in which a virtual printer does not have the same hardware characteristics as a local printer, but has a default (predefined) set of properties, such as printer margins, paper sizes, etc.

# Index

## **A**

Automated font distribution - 9

## **D**

Driver environment consistency - 16

## **F**

Fonts and font caching - 8

## **I**

Introduction - 4

## **N**

Non-Windows and mobile platforms support  
- 18

## **O**

Overview - 4

## **P**

Parallels RAS 18 release history - 5

Parallels RAS Universal Printing Best  
Practices - 6

Print formats - 6

Printer redirection optimizations - 11

Printer retention - 13

Printing settings and defaults - 7

## **S**

Security and integrity - 17

## **U**

Universal printing compression - 15